



Reimagine the Cross Bronx

**Concept Development
Workshop**

June 13, 2024



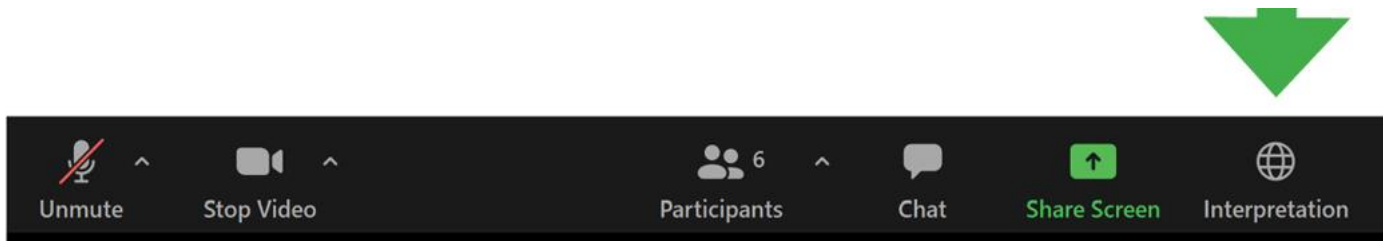
Español / বাংলা / ASL (Interpretation)

Please click on the interpretation icon for Spanish or Bangla to hear a simultaneous interpretation of the session. During the Q&A, staff will be available to provide language assistance for Spanish or Bangla speakers as needed. Spanish, or Bangla speaking participants may also contact us for additional assistance via email at CrossBronx@dot.nyc.gov

Por favor haga clic en el símbolo de interpretación en Español o Bengali para escuchar la interpretación simultánea de la sesión. Durante la sesión de preguntas y respuestas, el personal estará disponible para brindar asistencia en Español o Bengali. Participantes que hablen Español o Bengali también pueden comunicarse con nosotros para obtener asistencia adicional a través del correo electrónico CrossBronx@dot.nyc.gov

অন্যহ করে সেশনের একেযোগে বাংলা "নেত" ঠাণ্ডা,

ফরাসি বা বাংলার বাংলা আইকন িউক ক'ন। জেপাটর চলাকালীন, ঠাণ্ডা, ফরাসি, বা বাংলা ভাষাভাষীদের জন জেয়াজন অনুযায়ী ভাষা সহায়তা জদানের জন কমেরা উপল্ থাকে।
ঠাণ্ডা, ফরাসি বা বাংলাভাষী অংশগ্রহণকারীরাও অতিরী সহায়তার জন Crossbronx@dot.nyc.gov-এ ইমেলের মাধ্যমে
আমাদের সাথে যোগাযোগ করতে পারেন।



Alternative Ways to Join this Meeting

Instructions to speak at this meeting by **computer, smartphone, or tablet** are posted at:

- **Web Address:** **nyc.gov/engage** under “How-to Guides”, then expand Accessing Remote Meetings

If you wish to participate in the meeting by phone , please dial:

- **Phone Numbers:** **(646) 931 3860 or (929) 205 6099**

When prompted enter:

- **Meeting ID:** **944 6677 6690**
- **Participant ID:** **press pound (#) to skip**
- **Password:** **561767**

After this session, the project team can be reached by email at

CrossBronx@dot.nyc.gov



Agenda

- Study Background
- Community Feedback
- Ongoing Agency Actions
- Study Team Toolkit
- Applying the Toolkit
- Highway Capping Information
- Next Steps for the Study
- Directions for Roundtables!



Study Background



What is the Reimagine the Cross Bronx Study?

- The U.S. Department of Transportation (USDOT) is funding this study with a \$2 million grant as part of the Rebuilding American Infrastructure with Sustainability and Equity (RAISE) program.
- The Cross Bronx stretches across the borough as part of Interstate 95 (I-95).
- Constructed between 1948 and 1972 under Robert Moses, the Cross Bronx divides the borough and separates communities.
- It is currently one of the most congested American interstates with some of the highest rates of collisions, and neighborhoods surrounding the corridor experience some of the worst health issues in the city.



Study Team



Study Goals



Facilitate a community-driven vision for the future of the Cross Bronx



Create short, medium, and long-term concepts for improvements to the transportation network, public realm, and access to open space



Increase community leadership to support implementation of strategies and future planning efforts



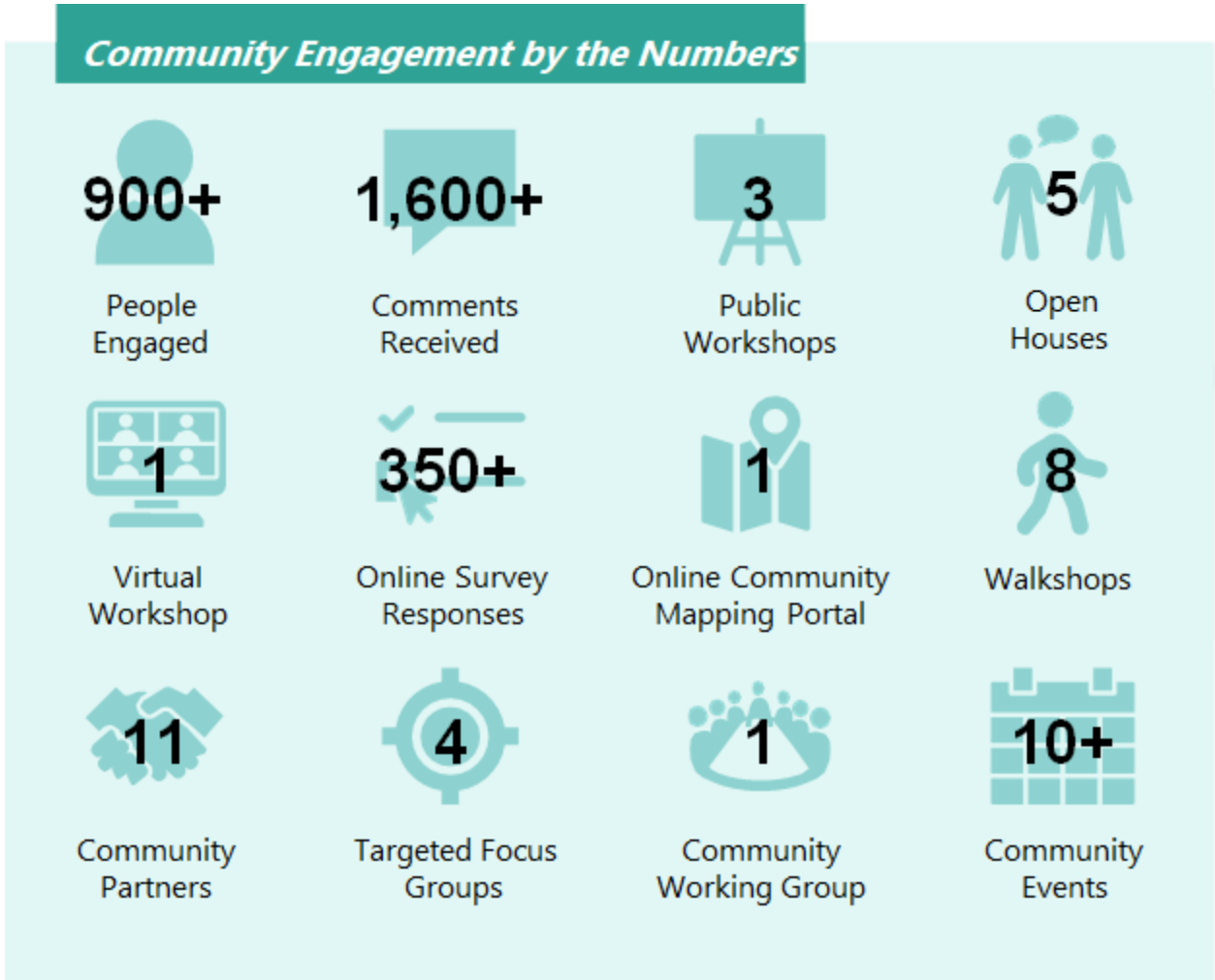
Foster long-term collaboration between Cross Bronx stakeholders, Bronx residents, and City and State government



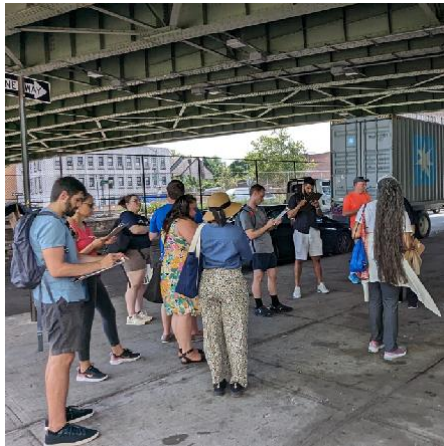
Study Area



What public engagement have we done so far?



Community Partner Outreach: Mexican Coalition



Walkshops



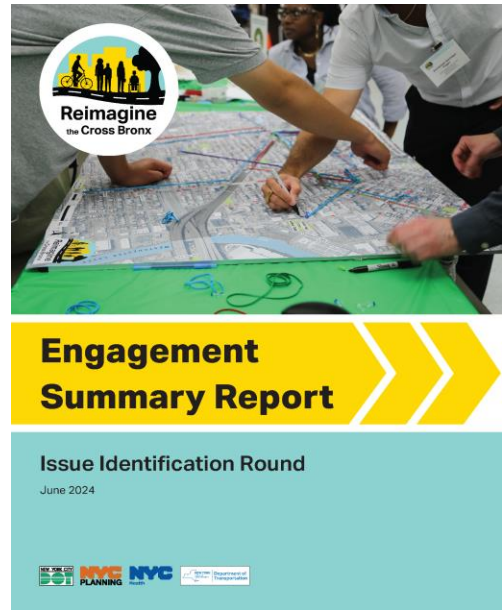
Open House



Guided Bike Tour

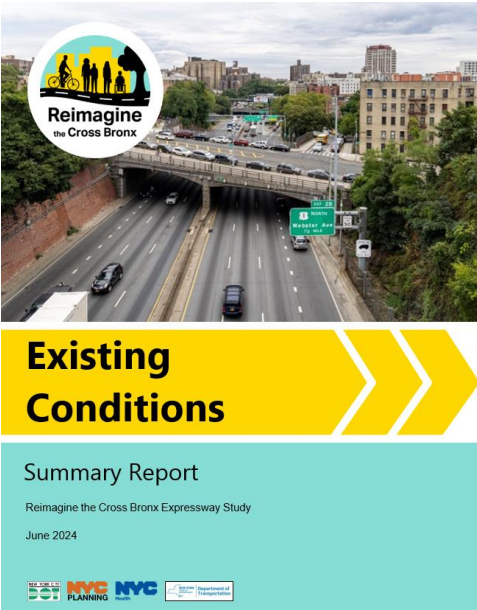


What resources are available about the Study?

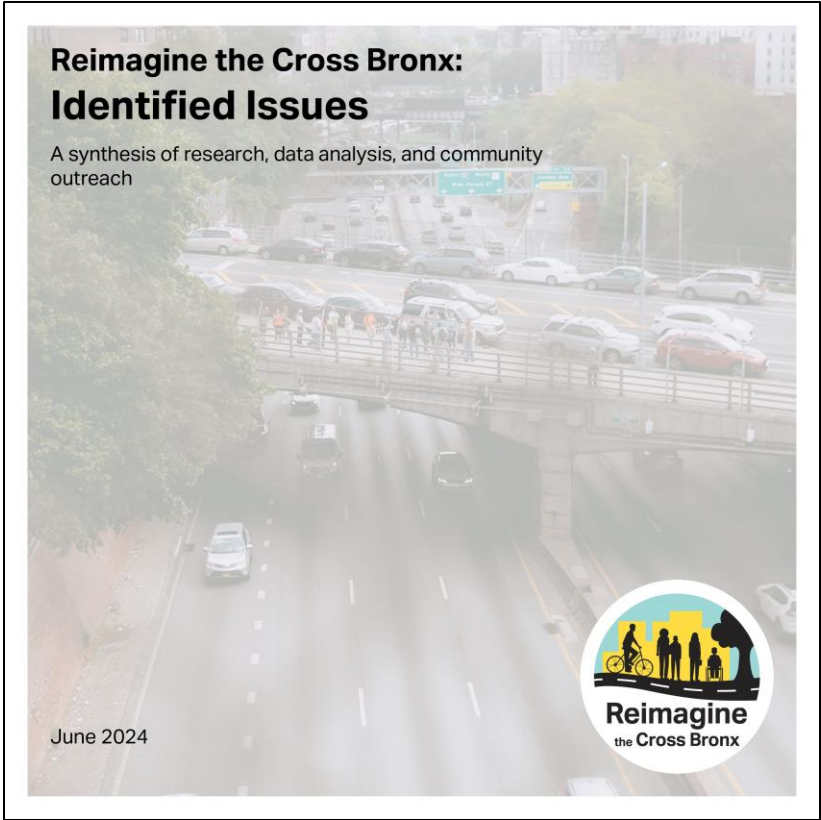


Summary of 2023 Issue Identification outreach and community feedback

+



Summary of Study Team research and analyses on the Study Area



A short booklet that combines findings from 2023 Study Area research, data analysis, and community outreach.

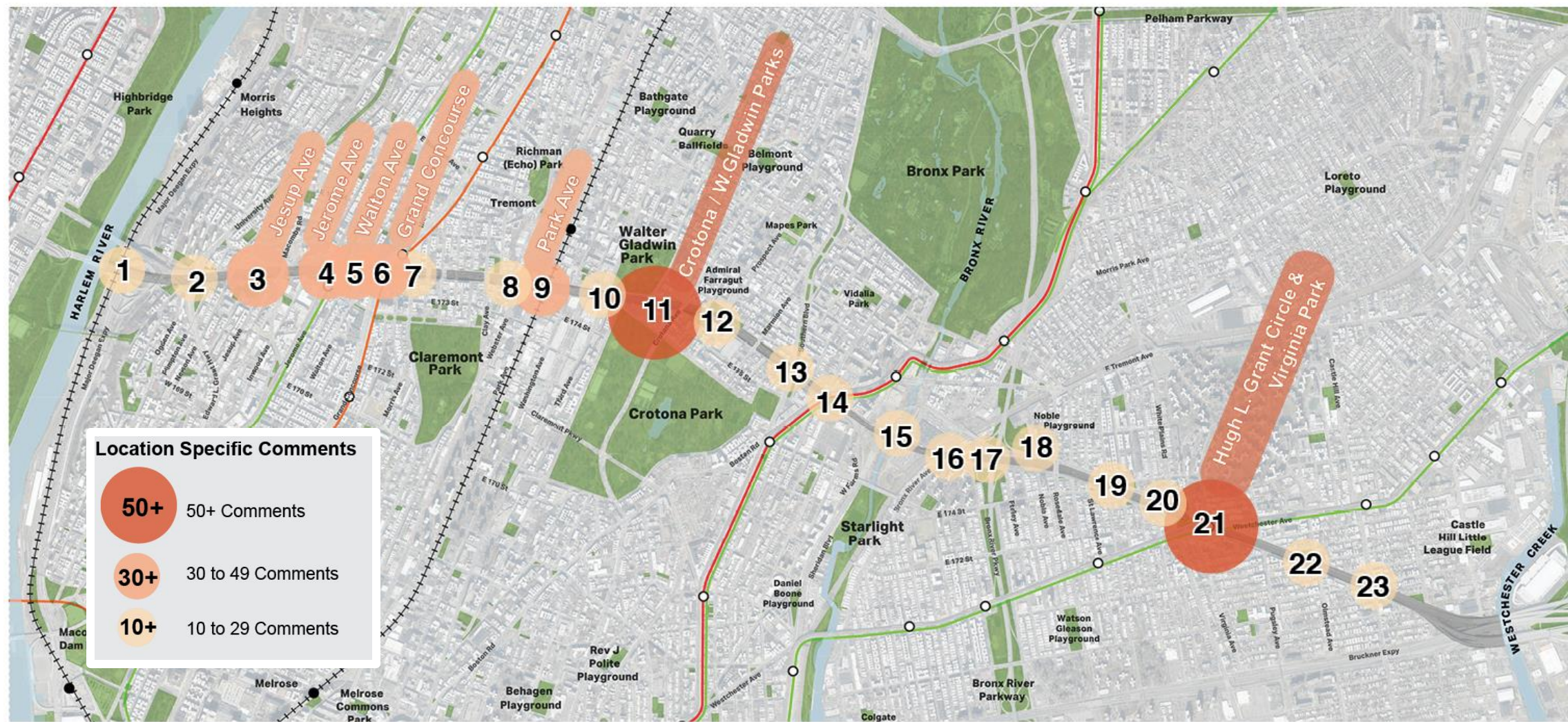
For accessible PDFs of these reports, visit crossbronx.info/resources



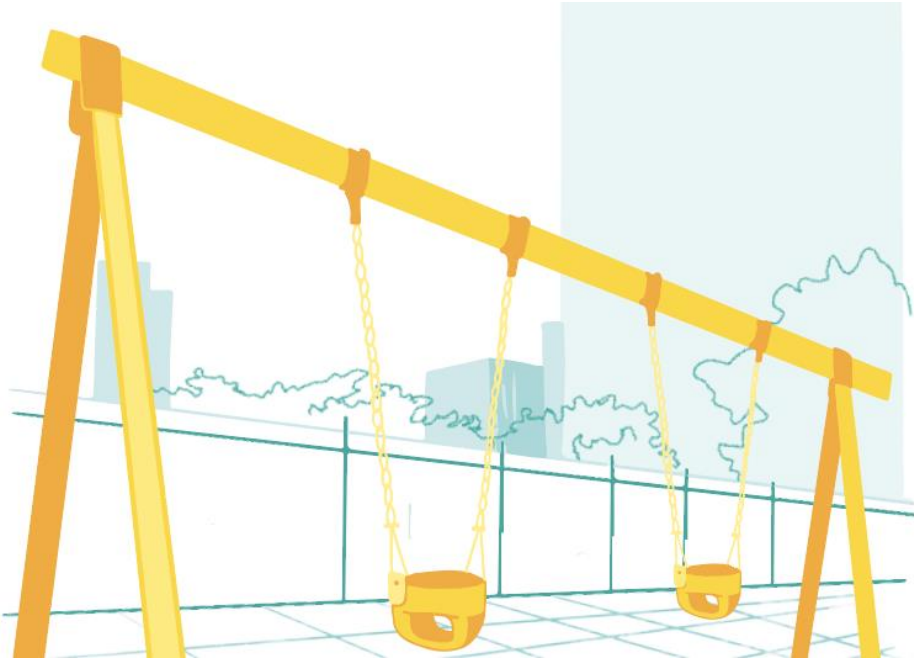
Community Feedback



What locations were on your mind?



Identified Issues: Healthy Communities



Open Space

Only half of all residents live in walking distance (up to 1/2 mile) of parks that are 6 acres or larger, greenways, recreation centers, or parks with pools.



Health Disparities

Residents of the Study Area experience disproportionately high rates of poor health.



Air Pollution

Air quality is a central concern for many community members living around the Cross Bronx.



Noise Pollution

Traffic noise from roadways can cause numerous health issues.



Identified Issues: Safe Communities

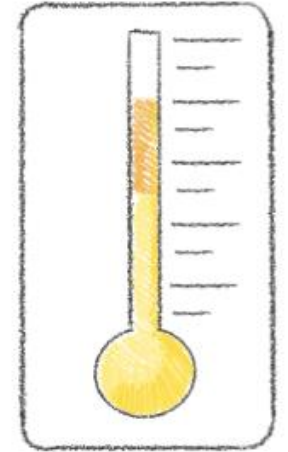


Intersection & Corridor Safety Concerns

Certain intersections and roads experience many crashes that cause severe pedestrian injuries.

Climate Hazards

Climate change concerns like extreme heat disproportionately affect those living in the Study Area.



Some locations are **2 to 7** degrees hotter than citywide averages



Identified Issues: Strong Communities

History & Culture

Communities around the Cross Bronx express pride in their history of advocacy and creativity.



Community Planning

Residents of neighborhoods surrounding the Cross Bronx corridor are overburdened and underserved.

Median Income:
\$38,694
Around half of the
city-wide median

Unemployment Rate:
13.4%
Almost double city-wide
rates



Governance Coordination & Community Input

Community members would like ongoing opportunities to weigh in on transformations of the corridor.



Identified Issues: Connected Communities



Freight Management

Freight movement accounts for 1 in 5 vehicles on the Cross Bronx.



Mobility Gaps

The Study Area has disconnected east-west roads and limited north-south connections.

Public Transit

Public transportation availability varies throughout the corridor.



Ongoing Agency Actions



How are Study Team agencies already addressing these issues?



NYC Department of City Planning

- Neighborhood planning
- Stewarding the Zoning Resolution
- Citywide Capital Planning



NYC Department of Health

- Educational services
- Health programming



NYC Department of Transportation

- Freight Management
- Street Safety
- Transit Improvements



NYS Department of Transportation

- Roadway maintenance
- Transportation policy



Study Team Toolkit





What is the Toolkit?

The “toolkit” includes a range of potential programs, projects and other improvements that can help address the identified issues. Many of these can come to the community in the short and medium term while we continue to work on long-term and larger-scale concepts.



Short-Term



Medium-Term



Long-Term





Applying the Toolkit!



West Section: Potential Concepts



Focus Areas:

-  Capping: Morris to Monroe Ave
-  Other concepts: Jerome Ave



**New or Improved
Pedestrian Bridge**



Street Safety



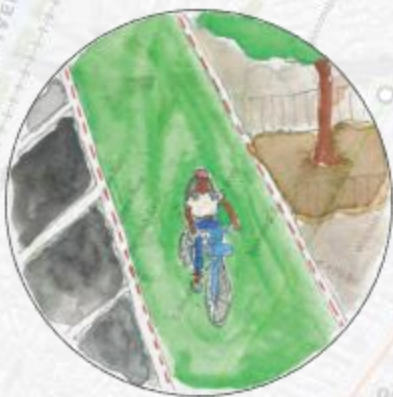
New Plants



Open Streets



Central Section: Potential Concepts



Bike Lanes



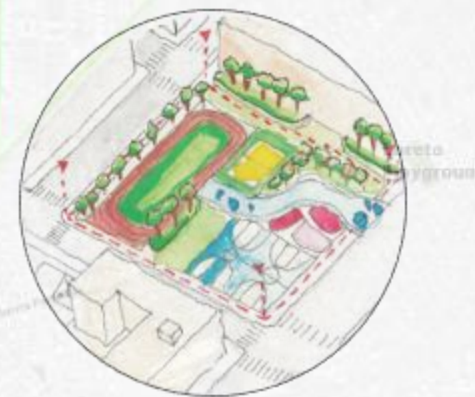
Focus Areas:



Capping: Crotona & Gladwin Parks



Other concepts: Webster Ave



Improve Parks



Accessible Streets



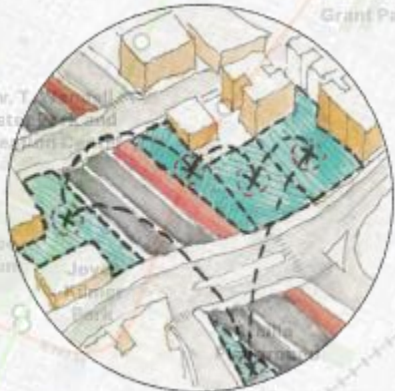
East Section: Potential Concepts



Mobility Hubs



Traffic Calming



Underdeveloped
Space Study

Focus Areas:



Capping: Hugh Grant Circle



Other concepts: Nobel Ave



Highway Capping Information



What is capping?

A highway cap (also called a deck, stitch, or highway lid) covers a highway that runs below ground. Capping can create new opportunities to increase public space, connect communities, and reduce some of the negative effects of the highway.



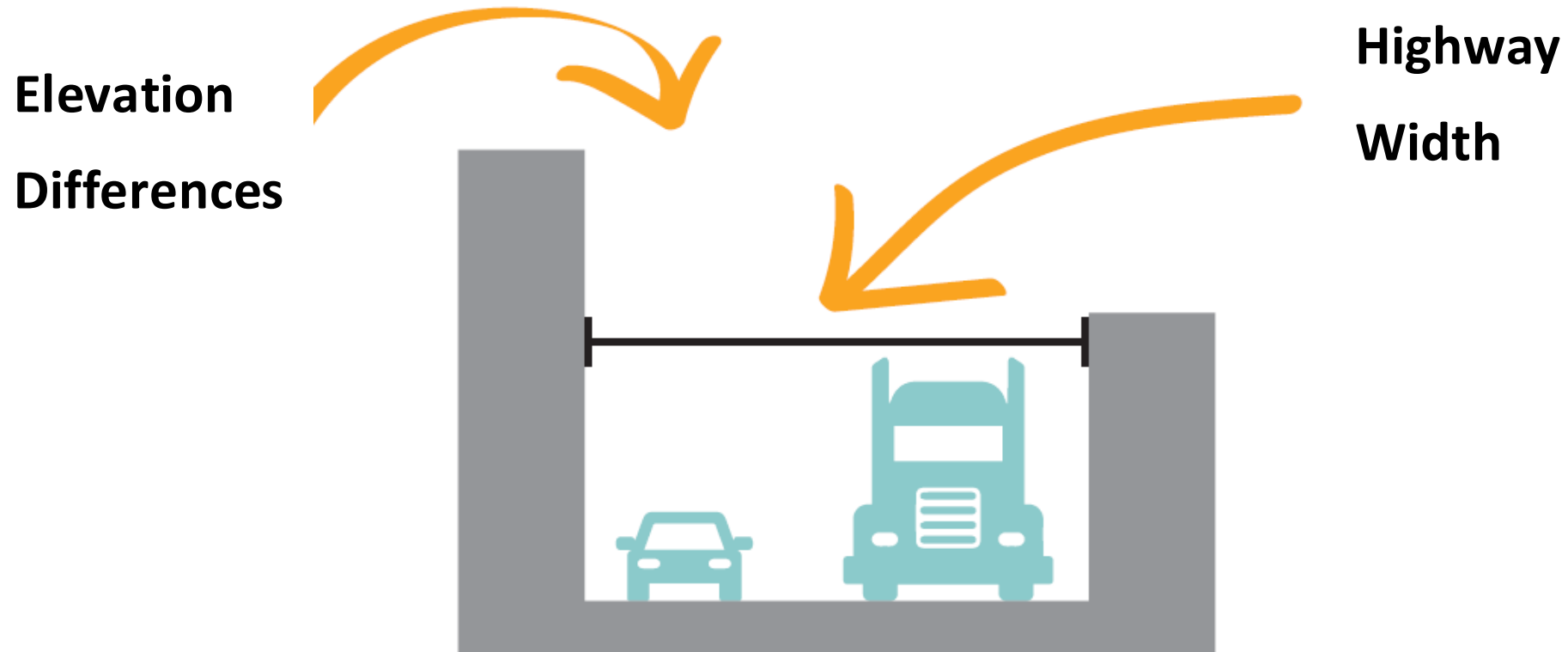
Before capping: a below-ground highway is open to the surrounding area

After capping: the new area can be used for features such as a public space

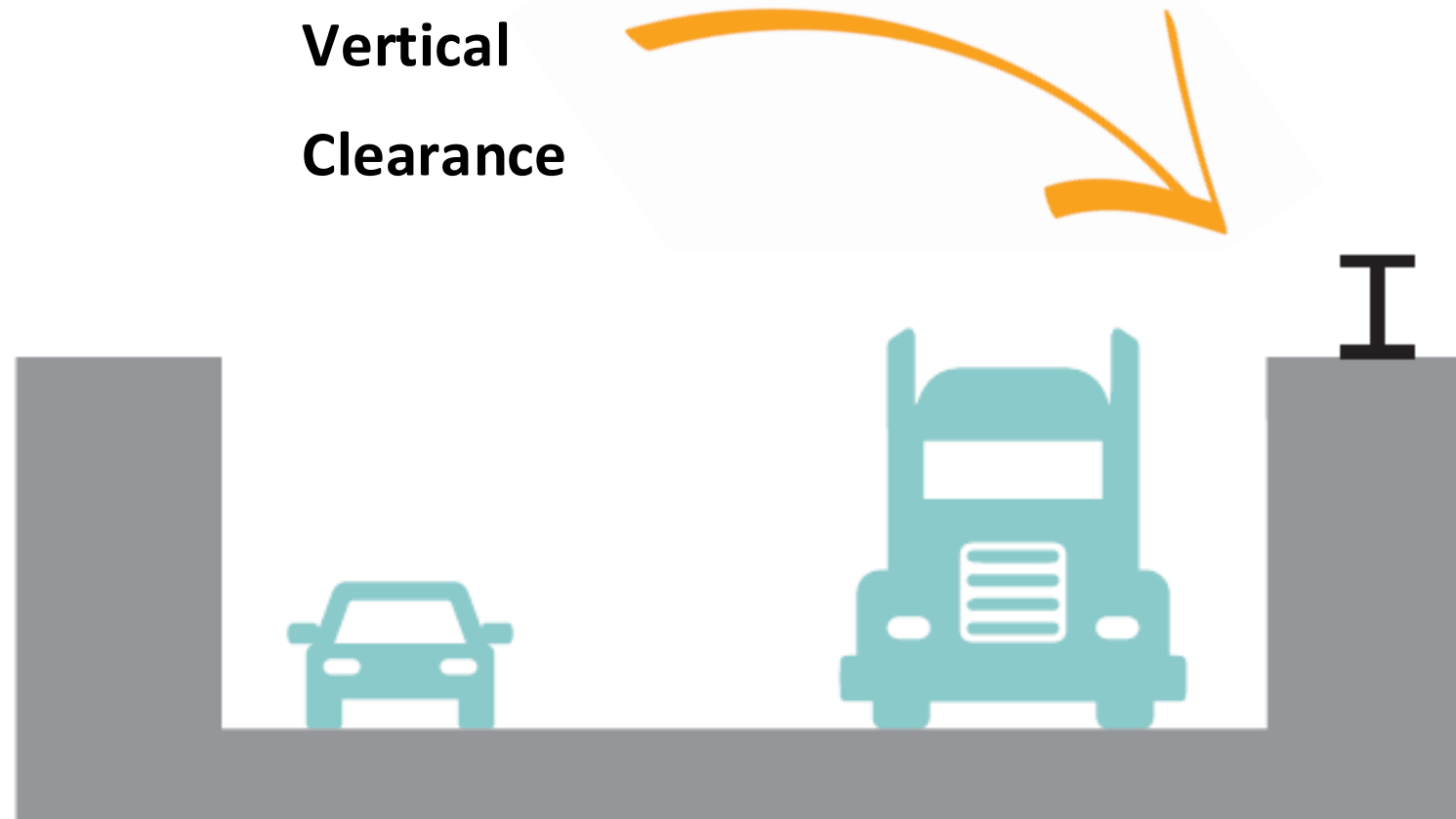


Where can a highway cap go?

Creating a new cap is a major engineering and construction process. It involves designing, funding, and building. That means there are many constraints on where a cap can go and what a cap can look like.



Where can a highway cap go?



How can capping potentially affect air quality?

- Capping can lower pollutant concentrations at places along the cap. However, it **does not eliminate air pollution** from vehicles.
- The **type of ventilation** used affects traffic-related air pollution in surrounding neighborhoods. Some types of ventilation can also contribute to noise pollution.
- There are **many strategies to manage vehicle emissions**. Some systems use fans to push it out through the ends of the capped section. Others use exhaust stacks to release it high into the air. Passive ventilation through grates can also be an option



Ventilation structure for the Battery Park Underpass
(Google Street View, March 2023)



What are potential benefits of capping a highway?



Expand access to green space



Reconnect communities and improving access to
community assets such as healthcare



Increase safety on nearby local streets



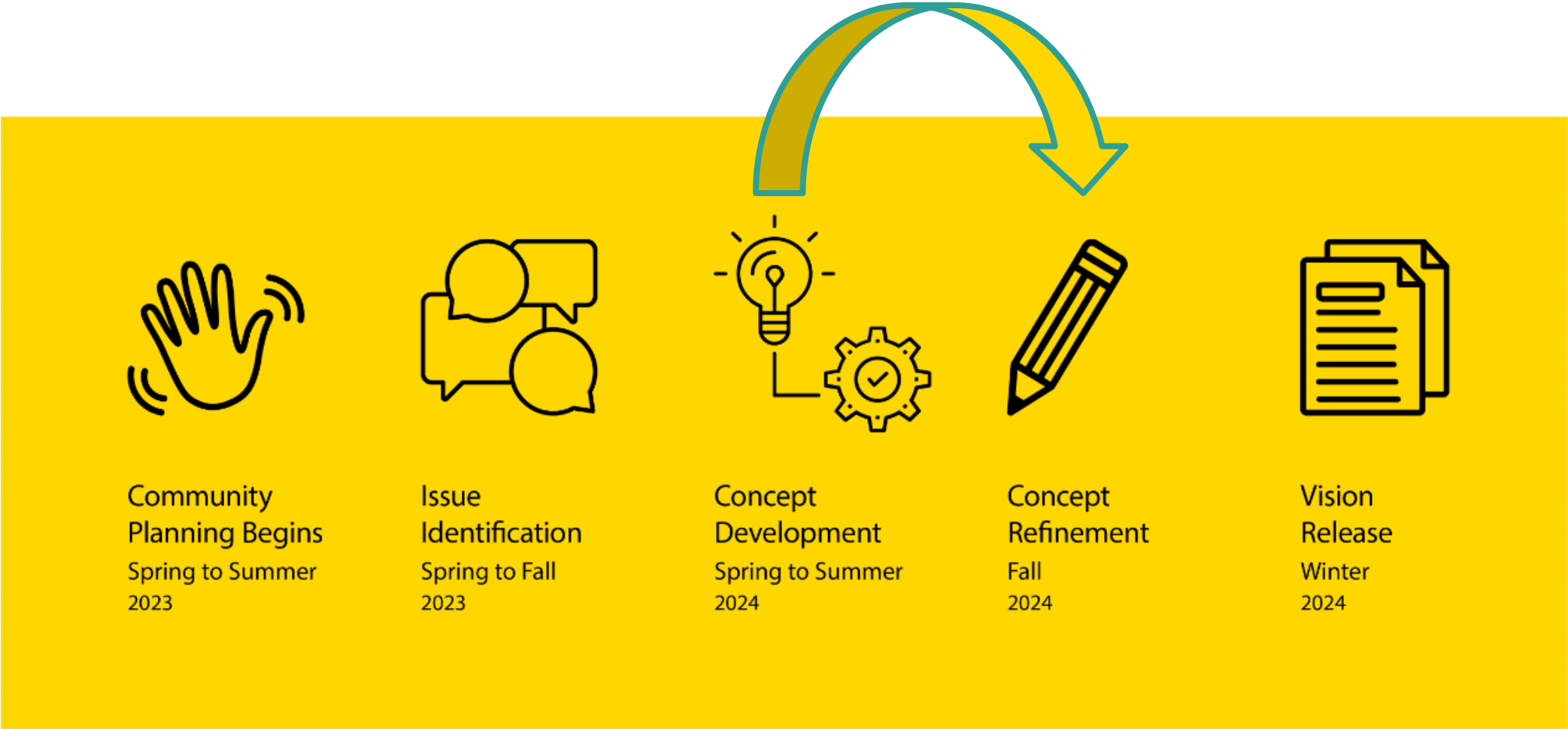
Lower community exposure to traffic noise



Next Steps for the Study



What are we doing with today's feedback?



Questions?



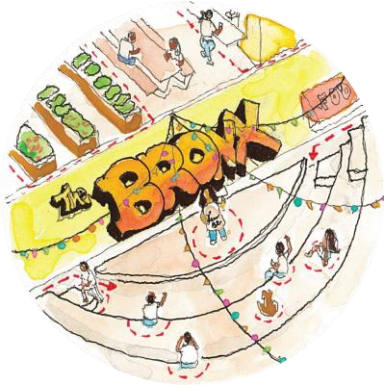
Directions for Breakout Rooms!



Directions for Breakout



1 focus area to explore capping options



1 focus area to discuss other concepts where capping is not feasible

West

Capping: Morris to Monroe Ave

Other concepts: Jerome Ave

Central

Capping: Crotona and Gladwin Parks

Other concepts: Webster Ave

East

Capping: Hugh Grant Circle

Other concepts: Noble Ave



Choose Your Room!

West

Harlem River to
Webster Ave

Central

Webster Ave to
Bronx River

East

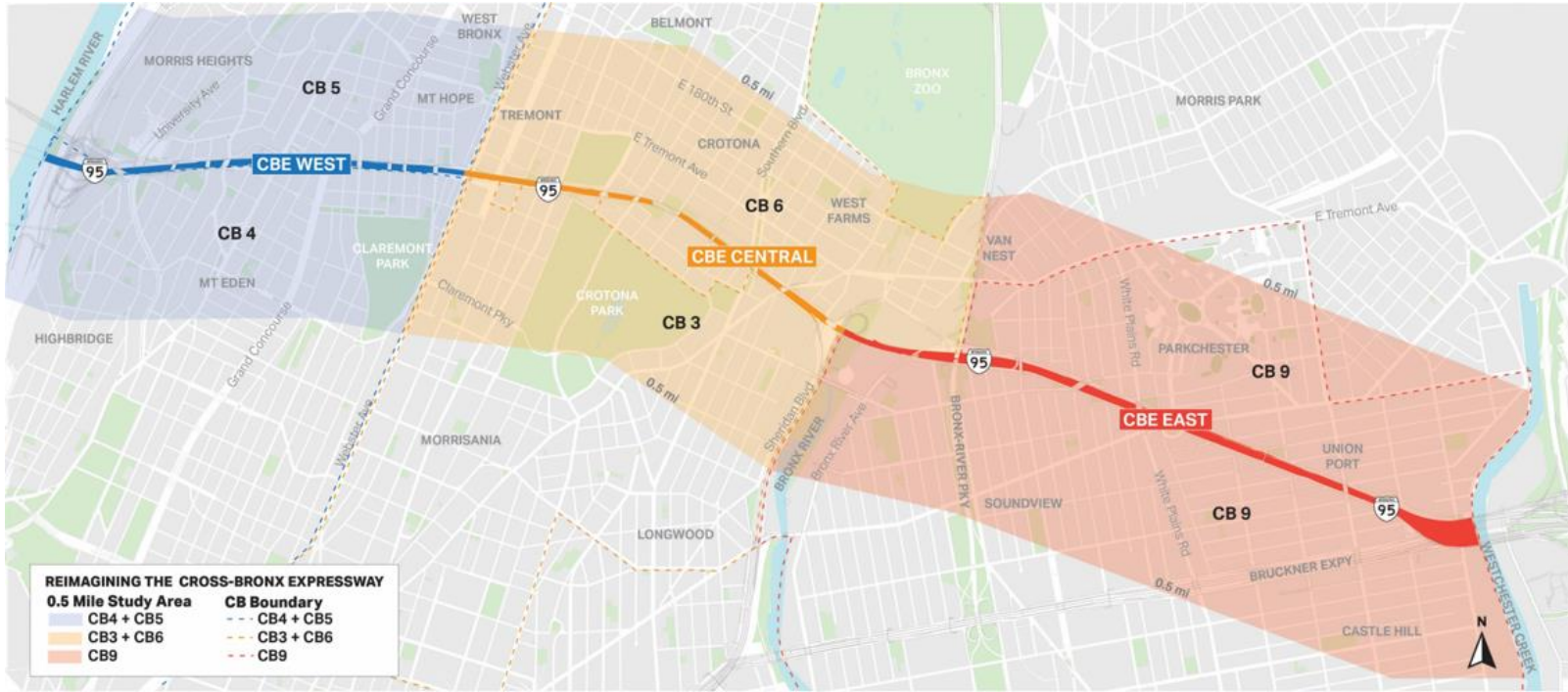
Bronx River to
Westchester Creek

Language Access

Sala en Español

বাংলা

রুম



Thank you!

